



Quick download instructions of the Academic Version of

# MiraMon

-----

Download from this link:

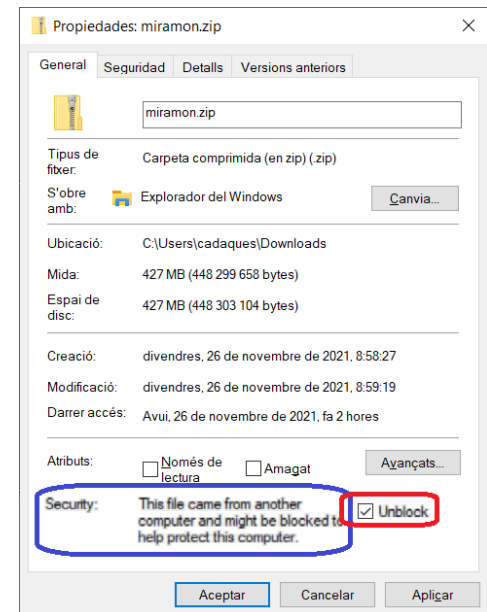
<https://www.mirammon.cat/mus/eng/index.htm>



The **complete** downloaded ZIP (~420 Mbyte), contains the entire program. With a connection of 600 Mbps the process takes about one minute.

Once downloaded, it is very convenient to **unlock the file from Windows File Explorer** by clicking on it with the right mouse button and choosing the "Properties" option, as shown in the illustration.

This will prevent unnecessary warnings from antivirus software such as Defender.

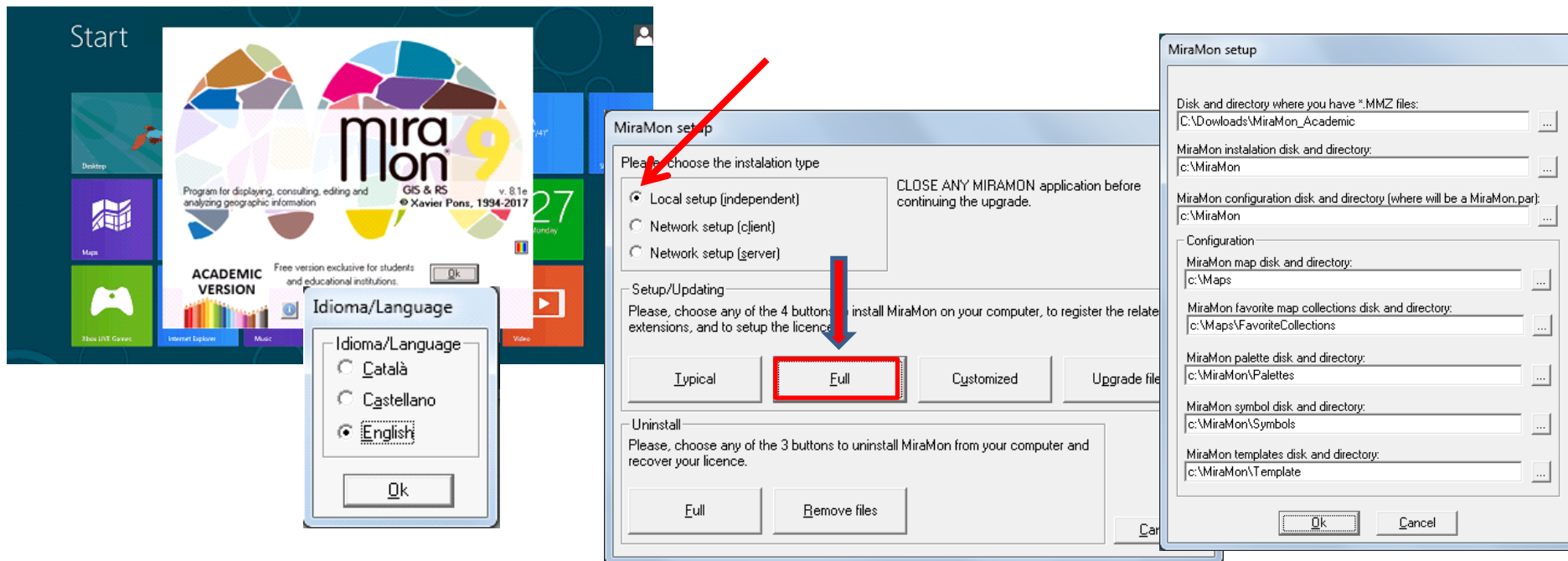




Once downloaded and unblocked, please **unzip the file** (right-click “*Extract to*” on most current operating systems) and **the process will output two files:**

- A very large one that contains the program itself (**MiraMon.mmz**)
- The **Inst\_MM9.exe** setup. This small program is the one that must be run to start the installation.

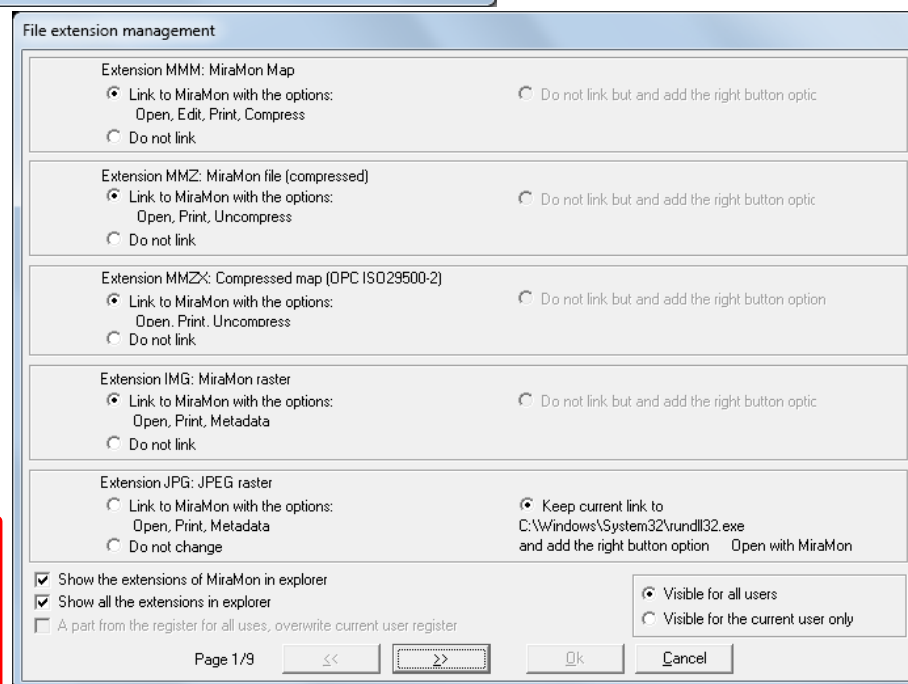
*(Note: In some operating systems and configurations, the user may not have enough privileges by default. In this case, you must execute the setup program by right-clicking on the file and selecting “Run as Administrator”.)*



**Chose language and accept the default options.** You will see dialog boxes about:

- Folders to be created (suggested: yes to all)
- File associations (accept the default options unless you know some specific format you don't want to link to MiraMon)

If you have any questions, you can write to:  
[suport@miramon.uab.cat](mailto:suport@miramon.uab.cat)



# We always appreciate you registration 😊

simply sending your email and research/teaching institution at:

[contacte@miramon.uab.cat](mailto:contacte@miramon.uab.cat)

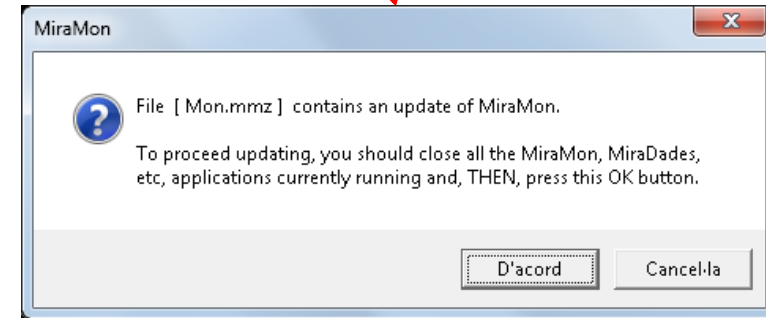
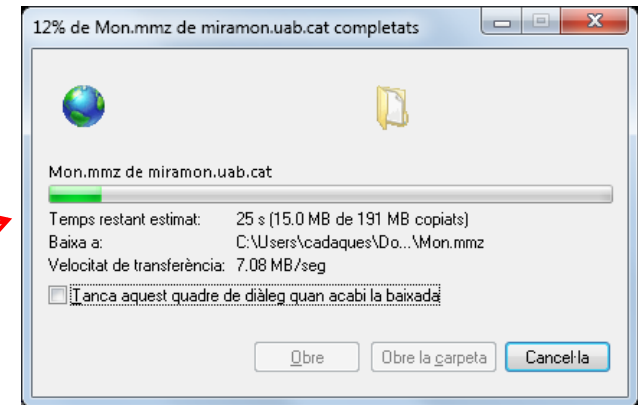
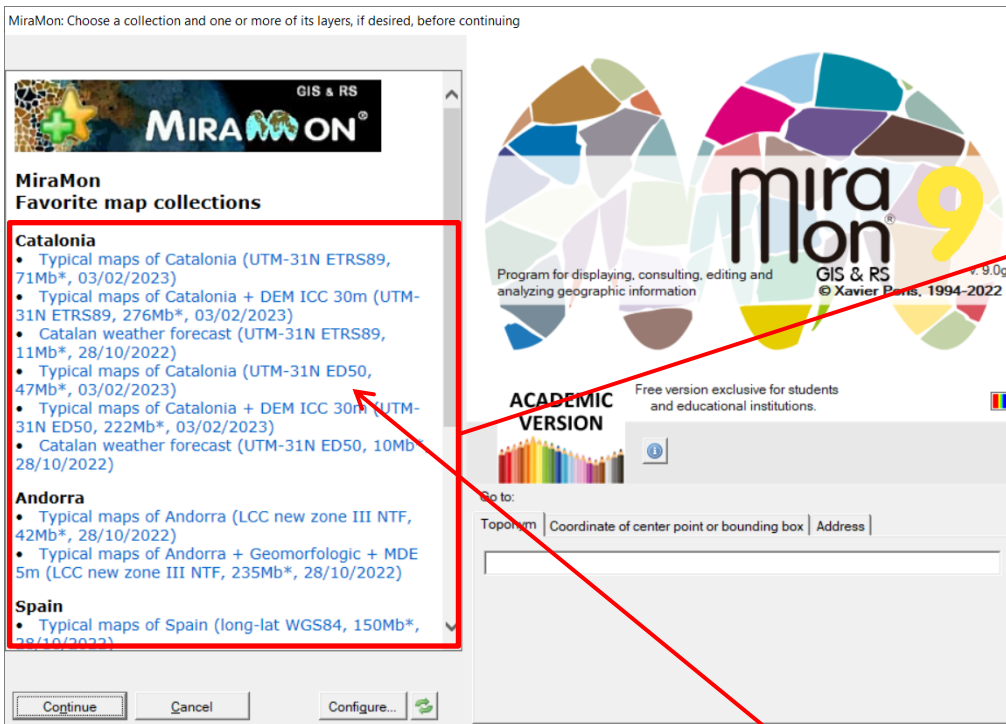
*subject: registration*

CREAF-UAB will only use these data in MiraMon RS and GIS related communications and will be the only institution with access to them. You have the right to modification and erasure of these data at any time.

-----

## Installing Favorite Collections

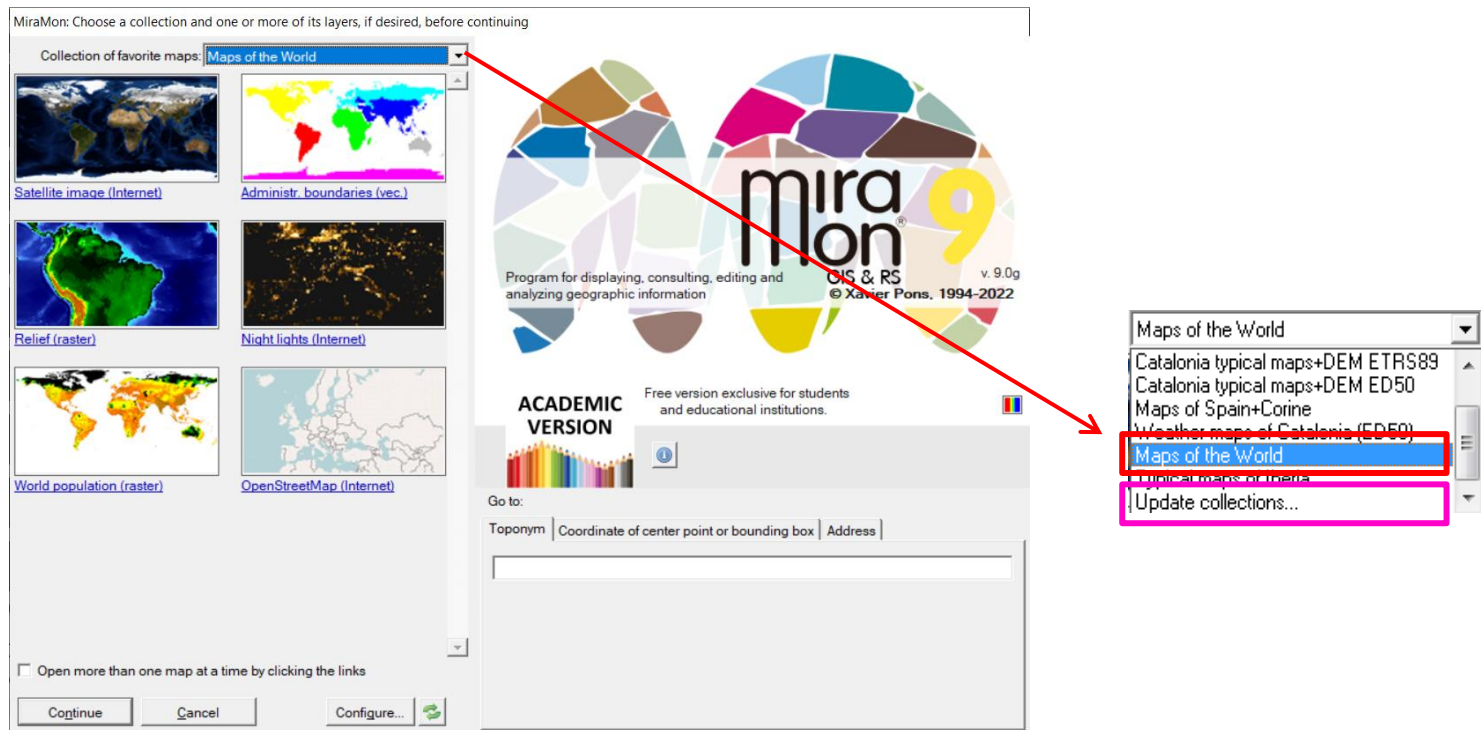
- Once you open MiraMon, you will see links to **Favorite Collections** (FC) on the left of the first dialog box. Installing **FC** prepares a set of quick links to typical layers and geoservices (DEM, administrative boundaries, etc).
- If you are a person (teacher, student) wishing to prepare a **set of specific resources** (a set of orthophotos and vegetation maps of your area, etc) with visual and fast access to them (instead of having to browse in you hard disk, network resources [UNC], etc) it is not difficult **to create your own FC**. This may facilitate your lessons or work. If interested, write to [contacte@miramon.uab.cat](mailto:contacte@miramon.uab.cat) to receive a technical document about how to do this.
- On next slides there are directions about how to install some of the FC already available from the MiraMon web site.



## Download and install your favorite collections.

We suggest to install at least the FC named **World** (Mon.mmz).

Clicking on the different collections will download the FC that will be installed in FC folder, typically:  
**C:\Maps\FavoriteCollections**

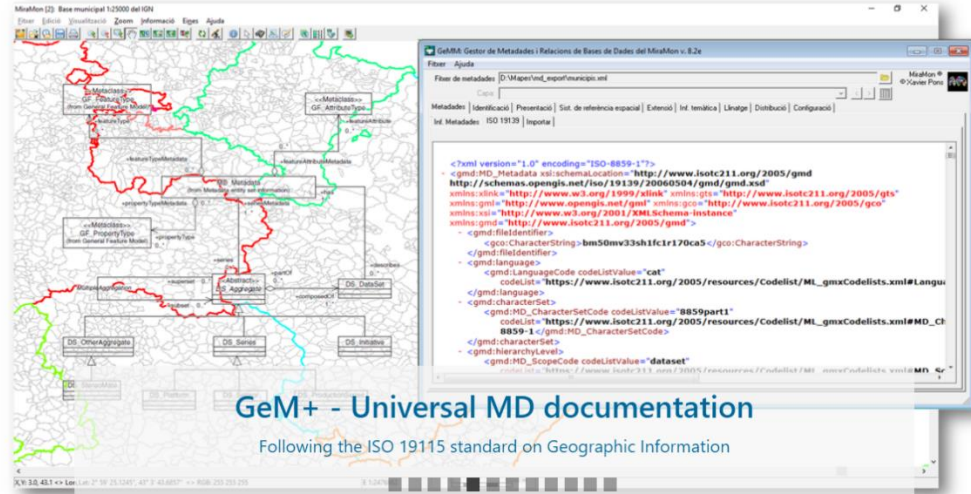


When opening a new MiraMon session, the **installed Favorite Collections** appear.

Many collections have built-in **toponyms** (+50 000 per collection) that allow you to search by place name.

You can download new FC at any time, or you can create your own, as we have indicated.

Remember that if have any questions, you can write to [suport@miramon.uab.cat](mailto:suport@miramon.uab.cat)



More information,  
downloads,  
courses, news, etc,  
on our **website**:



News

We open the academic license of the MiraMon Professional  
November 8, 2021

All news

Versions diary



Products

MiraMon Professional

MiraMon Universal Map Reader (Free)

Universal Geospatial Metadata Manager (GeM+)

MiraMon Browser and Map Server

Internet Map Publisher

MiraMon Updating Service (MUS)



Tweets by @MiraMon\_ENG



Embed

View on Twitter

Updates to this document:  
[here](#)



Community



Training



Research & technology